



US 20190115404A1

(19) **United States**

(12) **Patent Application Publication**
MOON et al.

(10) **Pub. No.: US 2019/0115404 A1**

(43) **Pub. Date: Apr. 18, 2019**

(54) **DISPLAY DEVICE**

H01L 51/52 (2006.01)

H01L 27/12 (2006.01)

(71) Applicant: **SAMSUNG DISPLAY CO., LTD.**,
Yongin-si (KR)

(52) **U.S. Cl.**

CPC **H01L 27/3246** (2013.01); **H01L 27/3262**
(2013.01); **H01L 51/5012** (2013.01); **H01L**
27/124 (2013.01); **H01L 51/5221** (2013.01);
H01L 51/5253 (2013.01); **H01L 51/5271**
(2013.01); **H01L 51/5206** (2013.01)

(72) Inventors: **Jeongwoo MOON**, Yongin-si (KR);
Byounghee PARK, Yongin-si (KR);
Jinkoo CHUNG, Yongin-si (KR)

(21) Appl. No.: **16/158,520**

(57) **ABSTRACT**

(22) Filed: **Oct. 12, 2018**

A display device includes a first substrate, an organic light emitting element on the first substrate and including a first electrode, an organic light emitting layer, and a second electrode, a pixel defining layer surrounding the first electrode, a thin film encapsulation layer, and a capping layer on the thin film encapsulation layer. The capping layer may include two reflective interfaces adjacent the light emission or pixel area spaced apart from one another in a plane view. The reflective interfaces may include a boundary between high and low refractive index materials and/or a reflective layer.

(30) **Foreign Application Priority Data**

Oct. 12, 2017 (KR) 10-2017-0132227

Publication Classification

(51) **Int. Cl.**

H01L 27/32 (2006.01)

H01L 51/50 (2006.01)

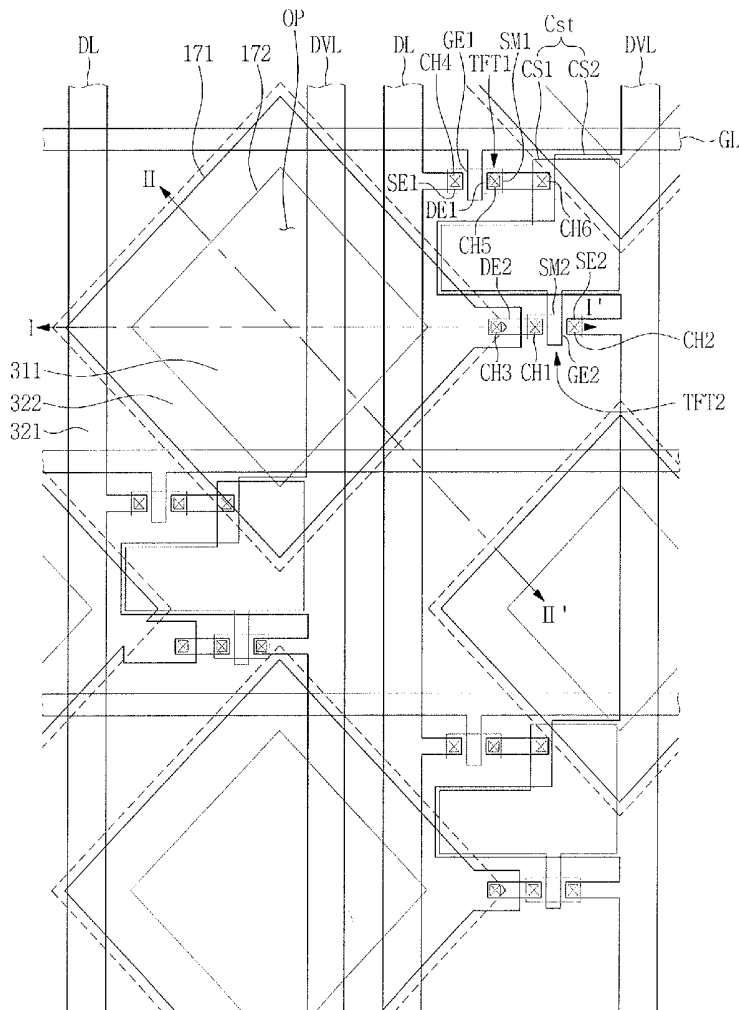


FIG. 1

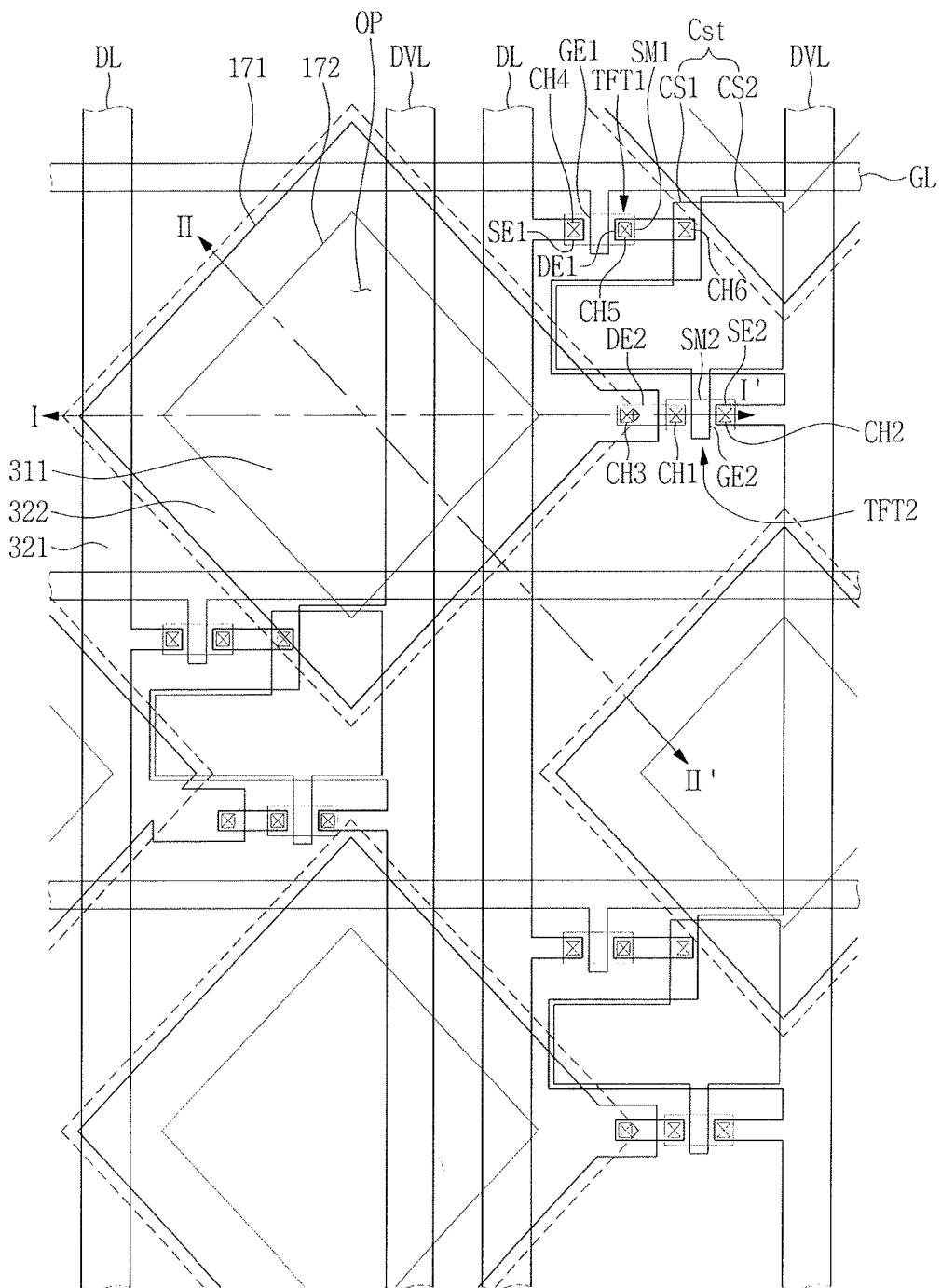


FIG. 2A

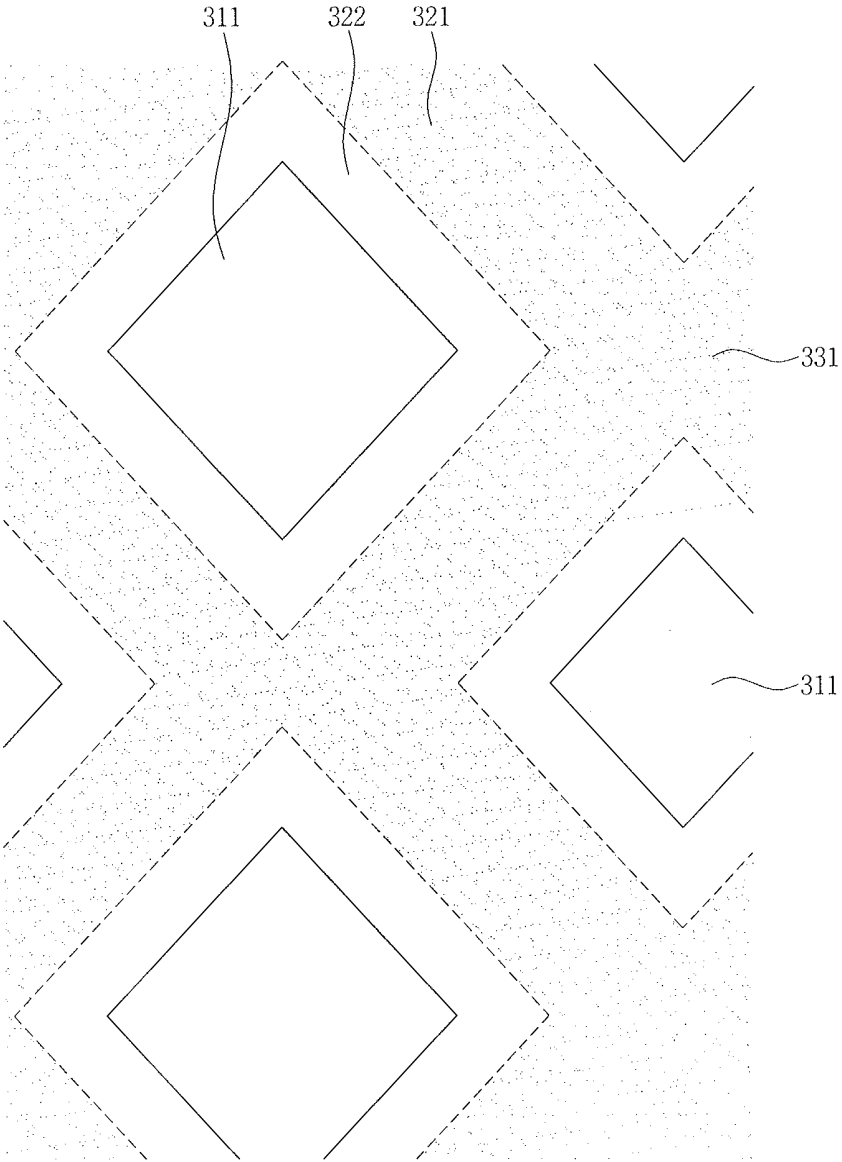


FIG. 2B

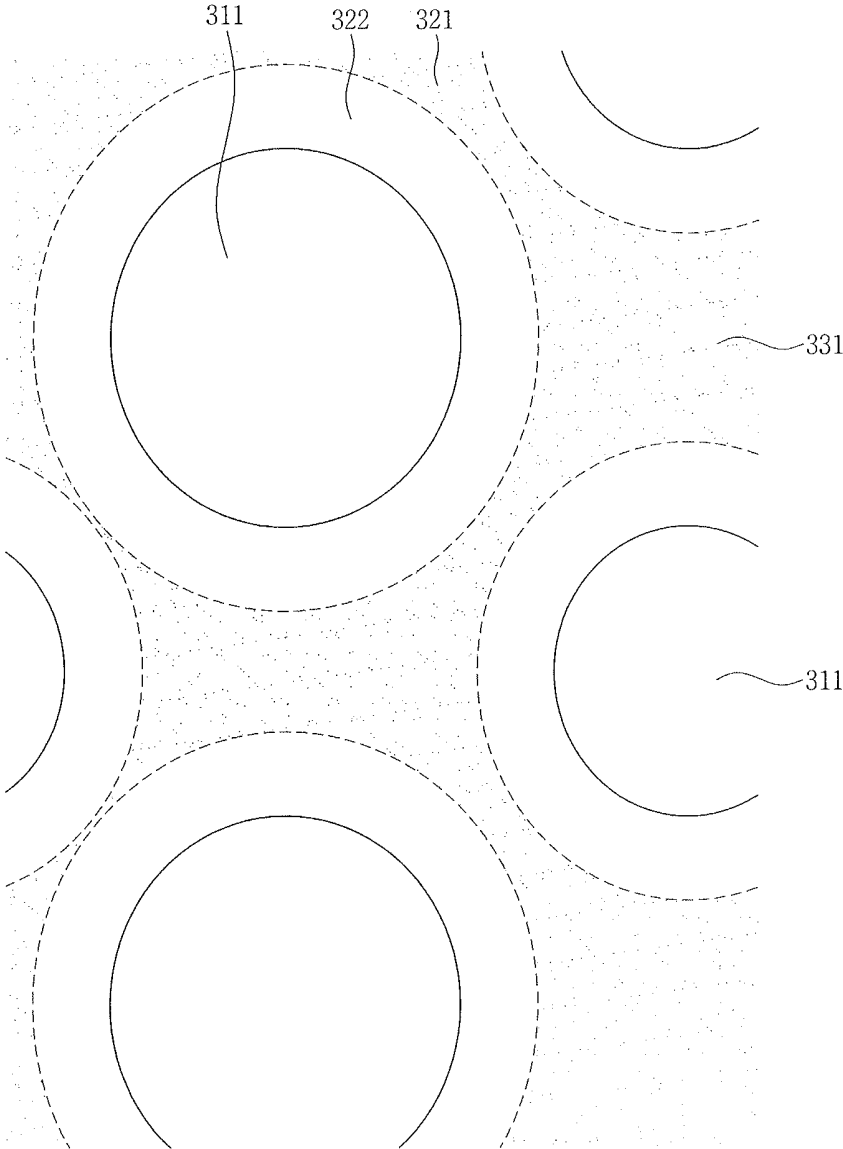


FIG. 4

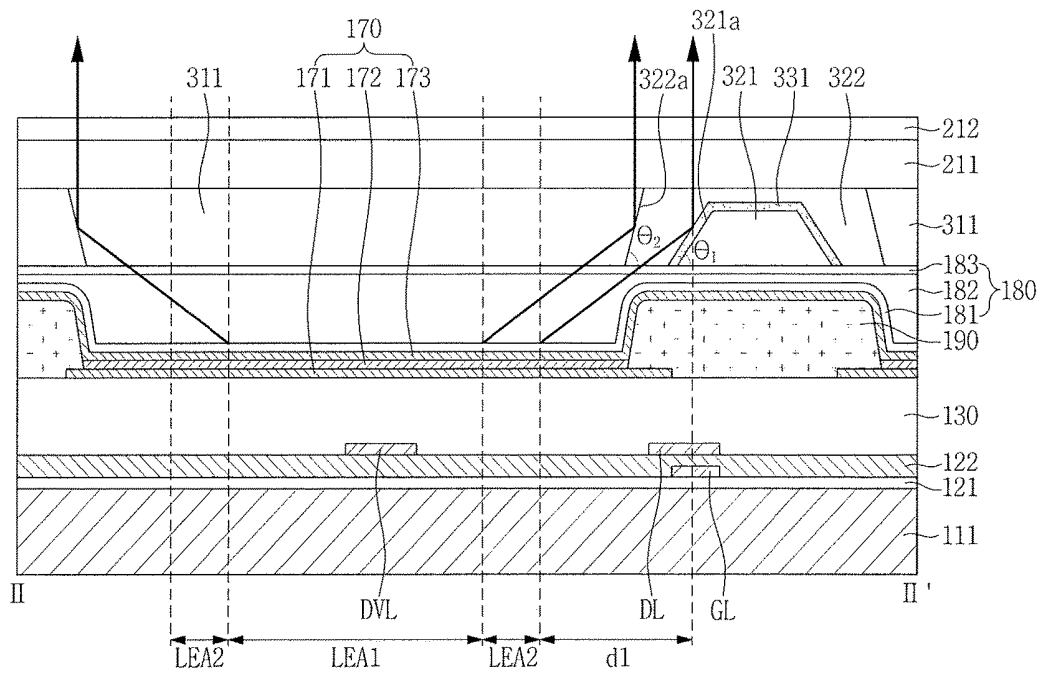


FIG. 5A

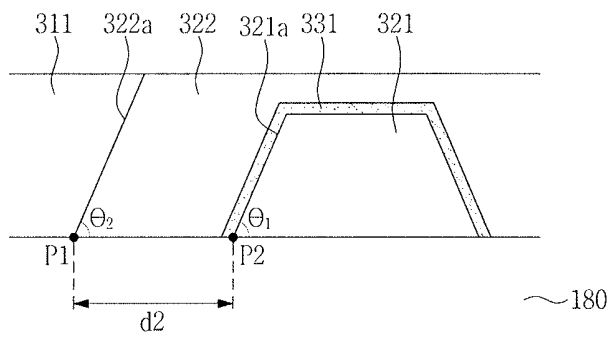


FIG. 5B

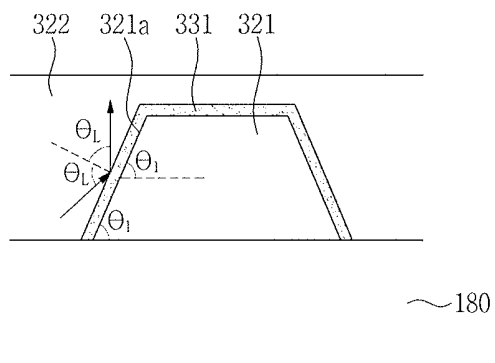


FIG. 5C

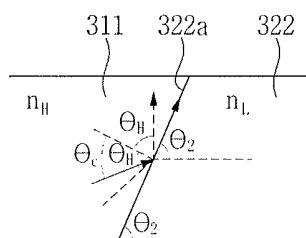


FIG. 6

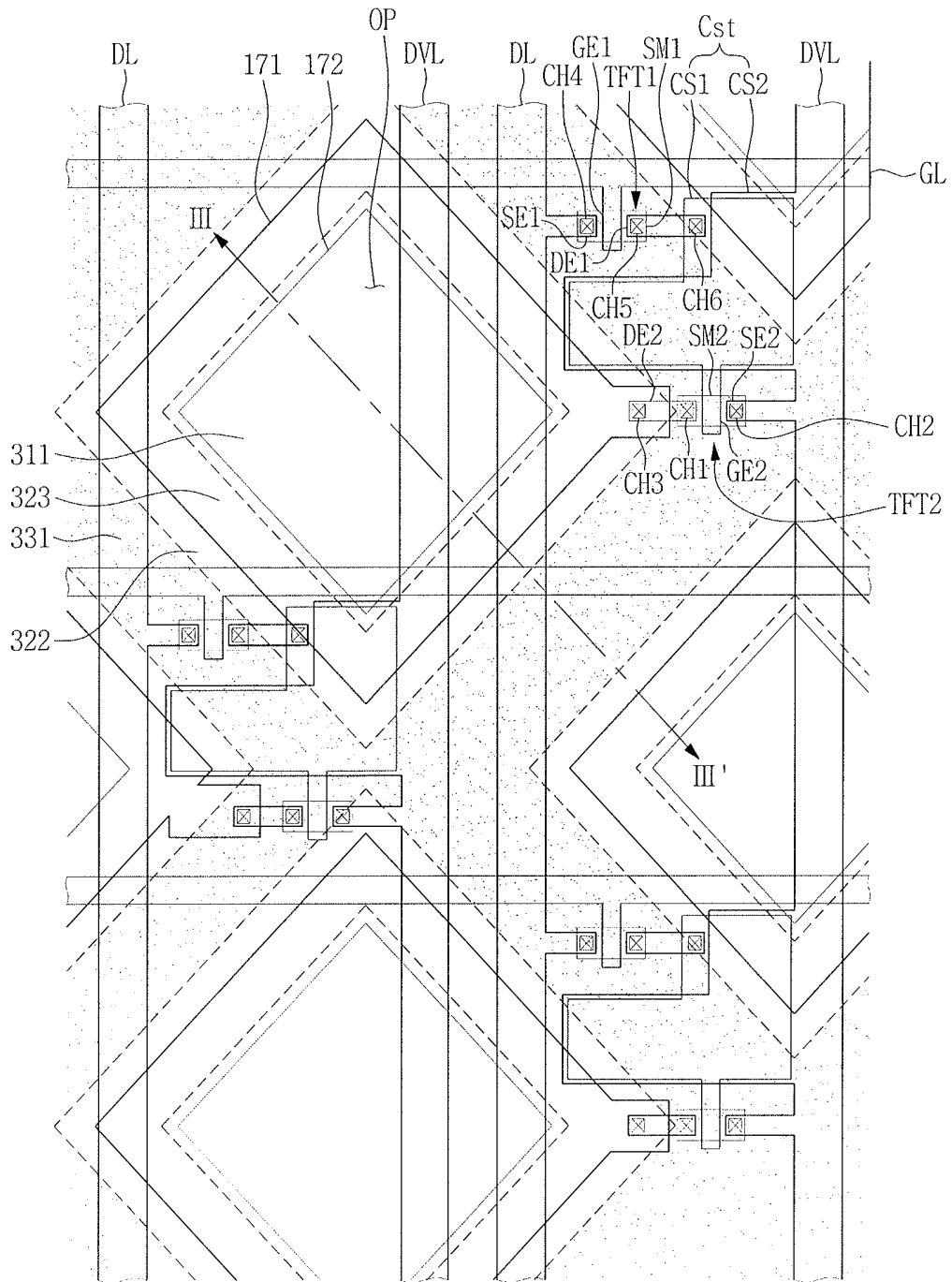


FIG. 7

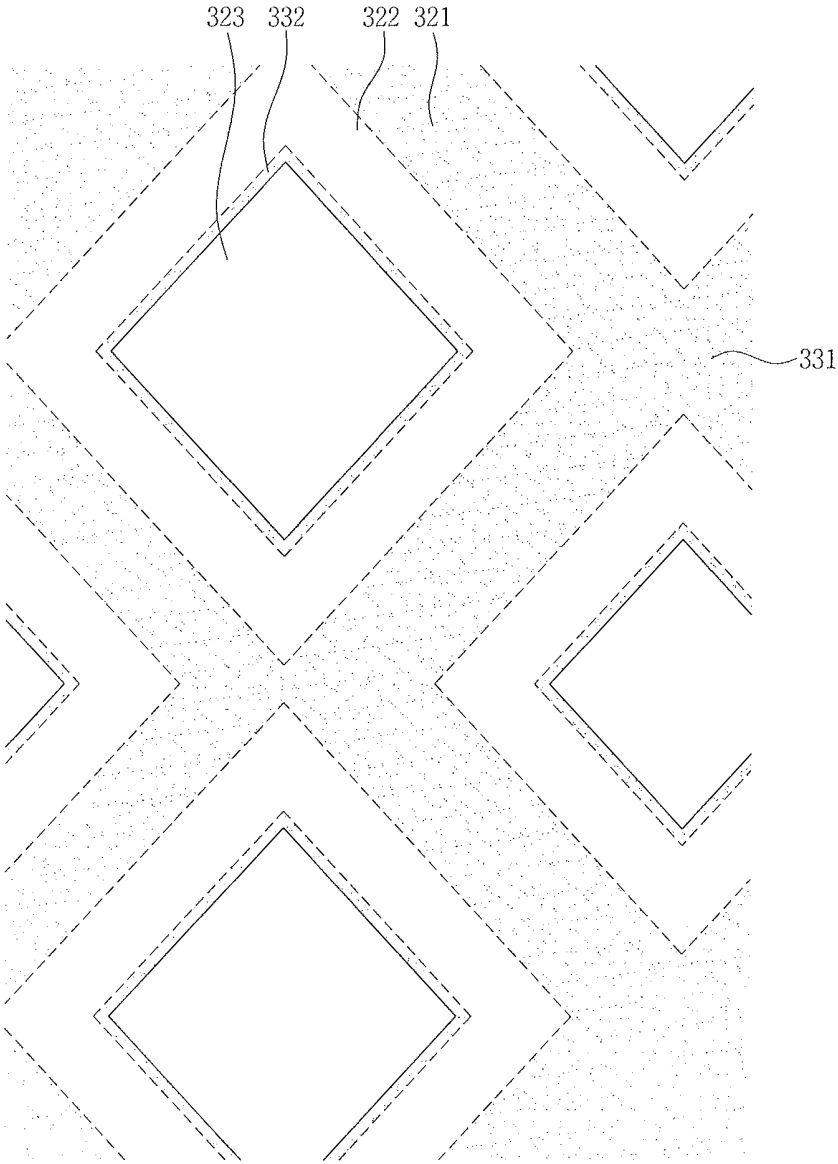
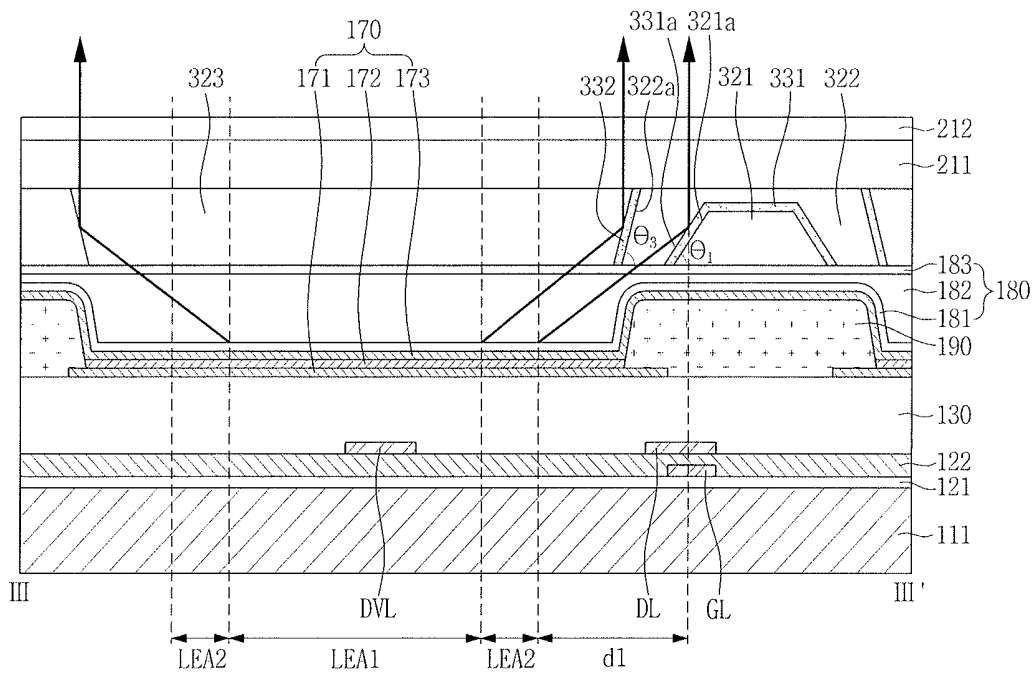


FIG. 8



* 300:321,322,322a,323,331,331a,332

FIG. 9

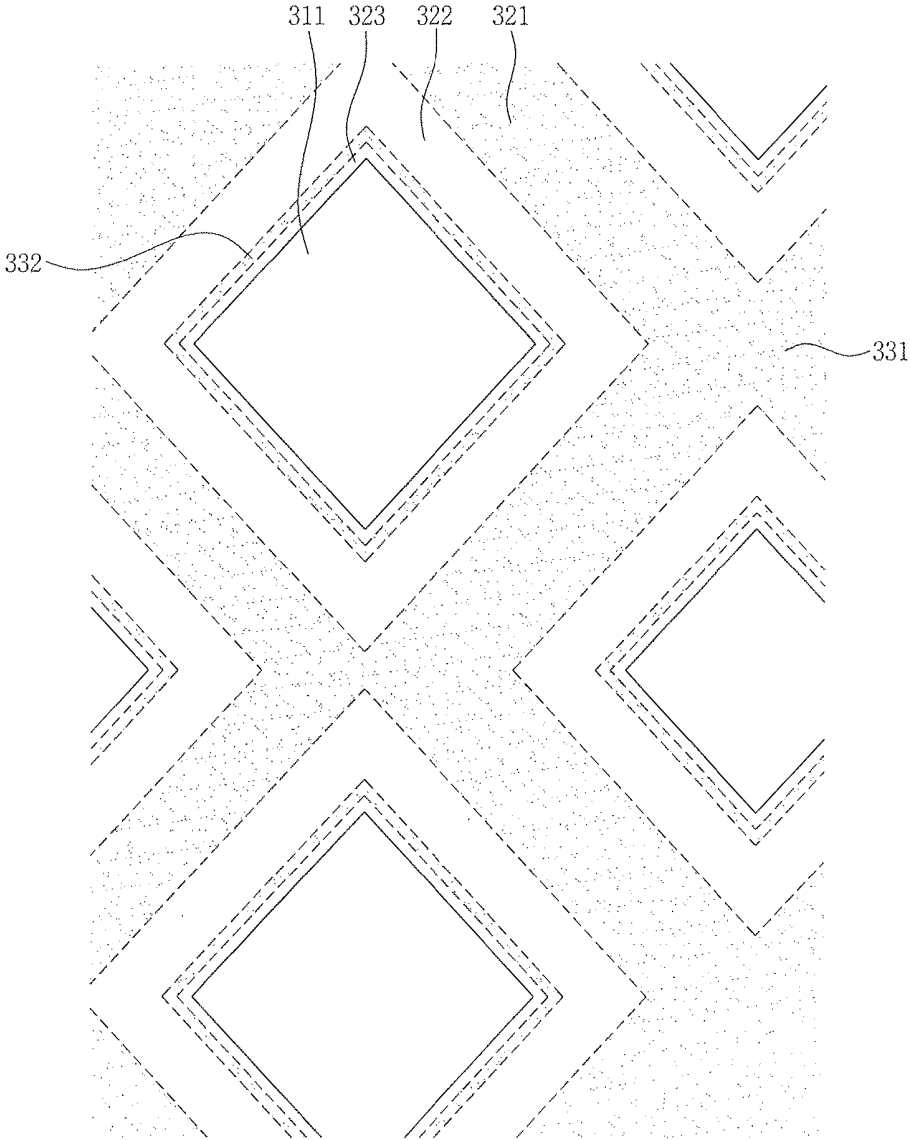
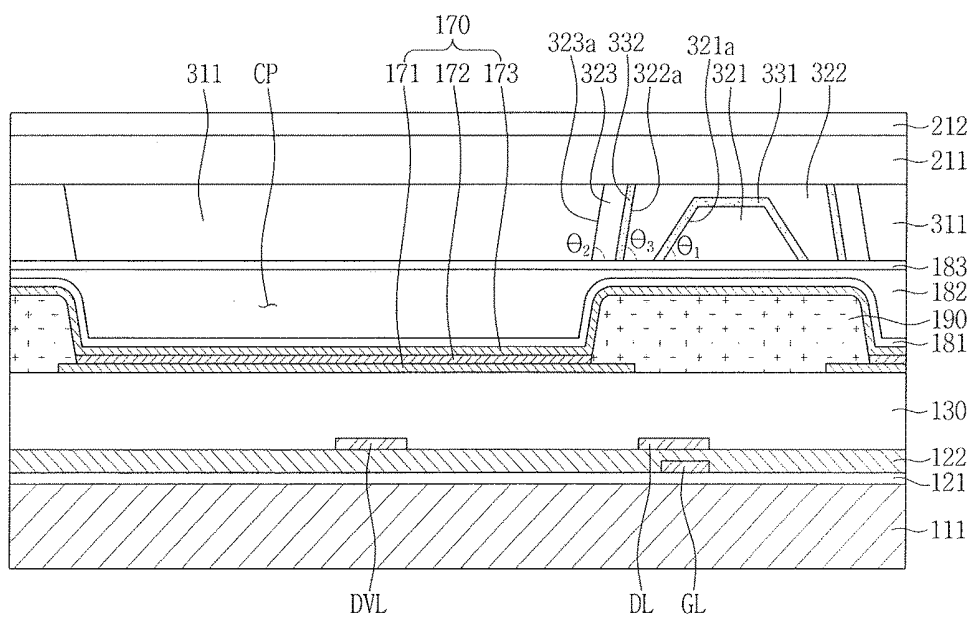


FIG. 10



* 300:311,321,321a,322,322a,323,323a,331,332

DISPLAY DEVICE**CROSS-REFERENCE TO RELATED APPLICATION**

[0001] Korean Patent Application No. 10-2017-0132227, filed on Oct. 12, 2017, in the Korean Intellectual Property Office, and entitled: "Display Device," is incorporated by reference herein in its entirety.

BACKGROUND

1. Field

[0002] Embodiments relate to a display device for improving light emission efficiency.

2. Description of the Related Art

[0003] Organic light emitting diode ("OLED") display devices are self-light emitting display devices that display images using an OLED. The OLED display devices are currently garnering attention by virtue of their characteristics such as low power consumption, high luminance, high reaction speed, and the like.

[0004] Light emitted by the OLED is emitted not only toward the front side but also toward the lateral side of the display device. Accordingly, light emission efficiency of the display device is lowered, and power consumption of the display device may increase. Thus, there is a need for a method of improving the light emission efficiency and for reducing the power consumption in the OLED display devices.

[0005] It is to be understood that this background of the technology section is intended to provide useful background for understanding the technology and as such disclosed herein, the technology background section may include ideas, concepts or recognitions that were not part of what was known or appreciated by those skilled in the pertinent art prior to a corresponding effective filing date of subject matter disclosed herein.

SUMMARY

[0006] According to an exemplary embodiment, a display device includes: a first substrate; an organic light emitting element disposed on the first substrate and including a first electrode, an organic light emitting layer, and a second electrode; a pixel defining layer surrounding the first electrode on the first substrate; a thin film encapsulation layer on the organic light emitting element and the pixel defining layer; a high refractive index portion overlapping, on a plane, at least a portion of the first electrode on the thin film encapsulation layer; a first low refractive index portion overlapping, on a plane, the pixel defining layer on the thin film encapsulation layer and including a first inclined portion forming a first angle with the thin film encapsulation layer; a second low refractive index portion disposed, on a plane, between the first low refractive index portion and the high refractive index portion on the thin film encapsulation layer and including a second inclined portion forming a second angle with the thin film encapsulation layer; and a first reflection layer disposed, on a plane, between the first

low refractive index portion and the second low refractive index portion on the thin film encapsulation layer.

[0007] The first angle may be about 45 degrees or more.

[0008] The second angle may be about 60 degrees or more.

[0009] The high refractive index portion may have a refractive index of about 1.6 or more and the first and second low refractive index portions may have refractive indices less than about 1.6.

[0010] The first low refractive index portion may have a refractive index substantially equal to a refractive index of the second low refractive index portion.

[0011] The display device may further include a circular polarization plate on the high refractive index portion and the first low refractive index portion and the second low refractive index portion.

[0012] The reflection layer may include at least one of molybdenum (Mo), an alloy (MoTi) of molybdenum and titanium, aluminum (Al), silver (Ag), APC (Ag; Pb; Cu), and platinum (Pt).

[0013] The first reflection layer may have a thickness of about 300 Å or more.

[0014] The first low refractive index portion may have a thickness less than a thickness of the second low refractive index portion.

[0015] The second low refractive index portion may be disposed on the first low refractive index portion and the first reflection layer.

[0016] According to an exemplary embodiment, a display device includes: a first substrate; an organic light emitting element disposed on the first substrate and including a first electrode, an organic light emitting layer, and a second electrode; a pixel defining layer surrounding the first electrode on the first substrate; a thin film encapsulation layer on the organic light emitting element and the pixel defining layer; a first low refractive index portion overlapping, on a plane, the pixel defining layer on the thin film encapsulation layer and including a first inclined portion forming a first angle with the thin film encapsulation layer; a second low refractive index portion including a second inclined portion forming a second angle with the thin film encapsulation layer; a third low refractive index portion spaced apart from the first low refractive index portion and overlapping, on a plane, at least a portion of the first electrode; a first reflection layer disposed between the first low refractive index portion and the second low refractive index portion on the thin film encapsulation layer; and a second reflection layer disposed between the second low refractive index portion and the third low refractive index portion on the thin film encapsulation layer. The second low refractive index portion is disposed between the first low refractive index portion and the third low refractive index portion on a plane.

[0017] The first low refractive index portion may have a refractive index substantially equal to a refractive index of the second low refractive index portion, and the second low refractive index portion may have a refractive index substantially equal to a refractive index of the third low refractive index portion.

[0018] The first reflection layer may include a material substantially equal to a material included in the second reflection layer.

[0019] The first angle and the second angle may be about 45 degrees or more.

[0020] According to an exemplary embodiment, a display device includes: a first substrate; an organic light emitting element disposed on the first substrate and including a first electrode, an organic light emitting layer, and a second electrode; a pixel defining layer surrounding the first electrode on the first substrate; a thin film encapsulation layer on the organic light emitting element and the pixel defining layer; a high refractive index portion overlapping at least a portion of the first electrode on the thin film encapsulation layer; a first low refractive index portion overlapping, on a plane, the pixel defining layer on the thin film encapsulation layer and including a first inclined portion forming a first angle with the thin film encapsulation layer; a second low refractive index portion including a second inclined portion forming a second angle with the thin film encapsulation layer; a third low refractive index portion directly contacting the high refractive index portion, spaced apart from the first low refractive index portion, and including a third inclined portion forming a third angle with the thin film encapsulation layer; a first reflection layer disposed between the first low refractive index portion and the second low refractive index portion; and a second reflection layer disposed between the second low refractive index portion and the third low refractive index portion. The second low refractive index portion is disposed between the first low refractive index portion and the third low refractive index portion on a plane.

[0021] The first low refractive index portion may have a refractive index substantially equal to a refractive index of the second low refractive index portion, and the second low refractive index portion may have a refractive index substantially equal to a refractive index of the third low refractive index portion.

[0022] The first angle and the second angle may be about 45 degrees or more.

[0023] The third angle may be about 60 degrees or more.

[0024] The high refractive index portion may have a refractive index of about 1.6 or more and the first, second and third low refractive index portions may have refractive indices less than about 1.6.

[0025] The first low refractive index portion may have a refractive index substantially equal to a refractive index of the second low refractive index portion, and the first low refractive index portion may have a refractive index substantially equal to a refractive index of the third low refractive index portion.

[0026] The foregoing is illustrative only and is not intended to be in any way limiting. In addition to the illustrative aspects, exemplary embodiments and features described above, further aspects, exemplary embodiments and features will become apparent by reference to the drawings and the following detailed description.

BRIEF DESCRIPTION OF THE DRAWINGS

[0027] Features will become apparent to those of skill in the art by describing in detail exemplary embodiments with reference to the attached drawings in which:

[0028] FIG. 1 illustrates a plan view of a pixel of a display device according to an exemplary embodiment;

[0029] FIG. 2A illustrates a plan view of a high refractive index portion, a first low refractive index portion, a first reflection layer, and a second low refractive index portion according to an exemplary embodiment;

[0030] FIG. 2B illustrates another plan view of a high refractive index portion, a first low refractive index portion, a first reflection layer and a second low refractive index portion;

[0031] FIG. 3 illustrates a cross-sectional view taken along the line I-I' of FIG. 1;

[0032] FIG. 4 illustrates a cross-sectional view taken along the line II-II' of FIG. 1;

[0033] FIG. 5A illustrates an enlarged view of the high refractive index portion, the first low refractive index portion, the first reflection layer, and the second low refractive index portion according to an exemplary embodiment;

[0034] FIG. 5B illustrates an enlarged view of a first inclined portion according to an exemplary embodiment;

[0035] FIG. 5C illustrates an enlarged view of a second inclined portion according to an exemplary embodiment;

[0036] FIG. 6 illustrates a plan view of a pixel of a display device according to another exemplary embodiment;

[0037] FIG. 7 illustrates a plan view of a first low refractive index portion, a first reflection layer, a second low refractive index portion, a second reflection layer, and a third low refractive index portion according to another exemplary embodiment;

[0038] FIG. 8 illustrates a cross-sectional view taken along the line of FIG. 7;

[0039] FIG. 9 illustrates a plan view of a high refractive index portion, a first low refractive index portion, a first reflection layer, a second low refractive index portion, a second reflection layer, and a third low refractive index portion according to still another exemplary embodiment; and

[0040] FIG. 10 illustrates a cross-sectional view of a display device according to still another exemplary embodiment.

DETAILED DESCRIPTION

[0041] Example embodiments will now be described more fully hereinafter with reference to the accompanying drawings; however, they may be embodied in different forms and should not be construed as limited to the embodiments set forth herein. Rather, these embodiments are provided so that this disclosure will be thorough and complete, and will fully convey exemplary implementations to those skilled in the art.

[0042] In the drawings, thicknesses of a plurality of layers and areas are illustrated in an enlarged manner for clarity and ease of description thereof. When a layer, area, or plate is referred to as being "on" another layer, area, or plate, it may be directly on the other layer, area, or plate, or intervening layers, areas, or plates may be present therebetween. Conversely, when a layer, area, or plate is referred to as being "directly on" another layer, area, or plate, intervening layers, areas, or plates may be absent therebetween. Further when a layer, area, or plate is referred to as being "below" another layer, area, or plate, it may be directly below the other layer, area, or plate, or intervening layers, areas, or plates may be present therebetween. Conversely, when a layer, area, or plate is referred to as being "directly below" another layer, area, or plate, intervening layers, areas, or plates may be absent therebetween.

[0043] The spatially relative terms "below", "beneath", "lower", "above", "upper" and the like, may be used herein for ease of description to describe the relations between one element or component and another element or component as

illustrated in the drawings. It will be understood that the spatially relative terms are intended to encompass different orientations of the device in use or operation, in addition to the orientation depicted in the drawings. For example, in the case where a device illustrated in the drawing is turned over, the device positioned “below” or “beneath” another device may be placed “above” another device. Accordingly, the illustrative term “below” may include both the lower and upper positions. The device may also be oriented in the other direction and thus the spatially relative terms may be interpreted differently depending on the orientations.

[0044] Throughout the specification, when an element is referred to as being “connected” to another element, the element is “directly connected” to the other element, or “electrically connected” to the other element with one or more intervening elements interposed therebetween. It will be further understood that the terms “comprises,” “including,” “includes” and/or “including,” when used in this specification, specify the presence of stated features, integers, steps, operations, elements and/or components, but do not preclude the presence or addition of one or more other features, integers, steps, operations, elements, components and/or groups thereof.

[0045] It will be understood that, although the terms “first,” “second,” “third,” and the like may be used herein to describe various elements, these elements should not be limited by these terms. These terms are only used to distinguish one element from another element. Thus, “a first element” discussed below could be termed “a second element” or “a third element,” and “a second element” and “a third element” may be termed likewise without departing from the teachings herein.

[0046] “About” or “approximately” as used herein is inclusive of the stated value and means within an acceptable range of deviation for the particular value as determined by one of ordinary skill in the art, considering the measurement in question and the error associated with measurement of the particular quantity (i.e., the limitations of the measurement system). For example, “about” may mean within one or more standard deviations, or within $\pm 30\%$, 20% , 10% , 5% of the stated value.

[0047] Unless otherwise defined, all terms used herein (including technical and scientific terms) have the same meaning as commonly understood by those skilled in the art to which this disclosure pertains. It will be further understood that terms, such as those defined in commonly used dictionaries, should be interpreted as having a meaning that is consistent with their meaning in the context of the relevant art and will not be interpreted in an ideal or excessively formal sense unless clearly defined in the present specification.

[0048] Some of the parts which are not associated with the description may not be provided in order to specifically describe embodiments and like reference numerals refer to like elements throughout the specification.

[0049] FIG. 1 illustrates a plan view of a pixel of a display device according to an exemplary embodiment. FIG. 2A illustrates a plan view of a high refractive index portion, a first low refractive index portion, a first reflection layer, and a second low refractive index portion according to an exemplary embodiment. FIG. 2B illustrates another plan view illustrating a high refractive index portion, a first low refractive index portion, a first reflection layer and a second low refractive index portion. FIG. 3 illustrates a cross-

sectional view taken along the line I-I' of FIG. 1. FIG. 4 illustrates a cross-sectional view taken along the line II-II' of FIG. 1.

[0050] A display device according to an exemplary embodiment includes a plurality of pixels. A pixel refers to a smallest unit for displaying images. Referring to FIGS. 1, 2, 3, and 4, the pixel includes a switching thin film transistor TFT1, a driving thin film transistor TFT2, an organic light emitting diode (“OLED”) 170, and a capacitor Cst.

[0051] The pixel may generate light of a predetermined color, e.g., red, green, or blue. However, the color of the light generated is not limited thereto, e.g., cyan, magenta, yellow, or the like, may be generated in the pixel.

[0052] The pixel is connected to a gate line GL, a data line DL, and a driving voltage line DVL. The gate line GL extends in a first direction. The data line DL extends in a second direction, which intersects the first direction, such that the data line DL crosses the gate line GL. Referring to FIG. 1, the driving voltage line DVL extends in a direction substantially the same as a direction in which the data line DL extends. The gate line GL transmits a scan signal, the data line DL transmits a data signal, and the driving voltage line DVL transmits a driving voltage.

[0053] The thin film transistors TFT1 and TFT2 may include the driving thin film transistor TFT2 for controlling the OLED 170 and the switching thin film transistor TFT1 for switching the driving thin film transistor TFT2. Although each pixel according to the present exemplary embodiment includes two thin film transistors TFT1 and TFT2, exemplary embodiments are not limited thereto. For example, each pixel may include a different number of thin film transistors and/or capacitors in another exemplary embodiment, e.g., one thin film transistor and one capacitor, three or more thin film transistors and two or more capacitors, and so forth.

[0054] The switching thin film transistor TFT1 includes a first gate electrode GE1, a first source electrode SE1, a first drain electrode DE1, and a first semiconductor layer SM1. The first gate electrode GE1 is connected to the gate line GL and the first source electrode SE1 is connected to the data line DL.

[0055] The first drain electrode DE1 is connected to a first capacitor plate CS1 through a fifth contact hole CH5 and a sixth contact hole CH6. The switching thin film transistor TFT1 transmits a data signal, applied to the data line DL, to the driving thin film transistor TFT2 according to a scan signal applied to the gate line GL.

[0056] The driving thin film transistor TFT2 includes a second gate electrode GE2, a second source electrode SE2, a second drain electrode DE2, and a second semiconductor layer SM2. The second gate electrode GE2 is connected to the first capacitor plate CS1. The second source electrode SE2 is connected to the driving voltage line DVL. The second drain electrode DE2 is connected to a first electrode 171 through a third contact hole CH3.

[0057] The first electrode 171 is connected to the second drain electrode DE2 of the driving thin film transistor TFT2. An organic light emitting layer 172 is on the first electrode 171 and a second electrode 173 (see FIG. 3) is on the organic light emitting layer 172. A common voltage is applied to the second electrode 173, and the organic light emitting layer 172 generates light according to an output signal of the driving thin film transistor TFT2.

[0058] The capacitor Cst is connected between the second gate electrode GE2 and the second source electrode SE2 of the driving thin film transistor TFT2. The capacitor Cst charges and maintains a signal input to the second gate electrode GE2 of the driving thin film transistor TFT2. The capacitor Cst includes the first capacitor plate CS1 connected to the first drain electrode DE1 through the sixth contact hole CH6 and a second capacitor plate CS2 connected to the driving voltage line DVL.

[0059] Referring to FIGS. 1, 2, 3, and 4, the thin film transistors TFT1 and TFT2 and the OLED 170 are on a first substrate 111. The material of the first substrate 111 is not particularly limited. For example, the first substrate 111 may include an insulating material, e.g., glass, plastic, quartz, or the like. The material for the first substrate 111 may be selected, e.g., from materials which are excellent in mechanical strength, thermal stability, transparency, surface smoothness, ease of handling, water resistance, or the like.

[0060] A buffer layer may be on the first substrate 111. The buffer layer may substantially prevent diffusion of impurities into the switching thin film transistor TFT1 and the driving thin film transistor TFT2.

[0061] The first semiconductor layer SM1 and the second semiconductor layer SM2 are on the first substrate 111. The first semiconductor layer SM1 and the second semiconductor layer SM2 may include a semiconductor material that serves as active layers of the switching thin film transistor TFT1 and the driving thin film transistor TFT2, respectively. Each of the first semiconductor layer SM1 and the second semiconductor layer SM2 may include a source area SA, a drain area DA, and a channel area CA between the source area SA and the drain area DA.

[0062] The first semiconductor layer SM1 and the second semiconductor layer SM2 may include, e.g., amorphous silicon or polycrystalline silicon, or may include, e.g., an oxide semiconductor. For example, each of the first semiconductor layer SM1 and the second semiconductor layer SM2 may include an inorganic semiconductor material or an organic semiconductor material. The source area SA and the drain area DA may be doped with an n-type impurity or a p-type impurity.

[0063] A gate insulating layer 121 may be on the first semiconductor layer SM1 and the second semiconductor layer SM2. The gate insulating layer 121 protects the first semiconductor layer SM1 and the second semiconductor layer SM2. The gate insulating layer 121 may include an organic insulating material or an inorganic insulating material.

[0064] The first gate electrode GE1 and the second gate electrode GE2 are on the gate insulating layer 121. The first gate electrode GE1 and the second gate electrode GE2 may overlap, e.g., along a third direction intersecting the first and second directions and orthogonal to an upper surface of the substrate 111, the channel areas CA of the first semiconductor layer SM1 and the second semiconductor layer SM2, respectively. In addition, the first capacitor plate CS1 may be on the gate insulating layer 121. The second gate electrode GE2 may be unitarily with the first capacitor plate CS1.

[0065] An insulating interlayer 122 is on the first gate electrode GEE the second gate electrode GE2, and the first capacitor plate CS1. The insulating interlayer 122 may include an organic insulating material or an inorganic insulating material.

[0066] The first source electrode SE1, the first drain electrode DEL the second source electrode SE2, and the second drain electrode DE2 may be on the insulating interlayer 122. The second drain electrode DE2 contacts the drain area DA of the second semiconductor layer SM2 through a first contact hole CH1 in the gate insulating layer 121 and the insulating interlayer 122. The second source electrode SE2 contacts the source area SA of the second semiconductor layer SM2 through a second contact hole CH2 in the gate insulating layer 121 and the insulating interlayer 122. The first source electrode SE1 contacts the first semiconductor layer SM1 through a fourth contact hole CH4 in the gate insulating layer 121 and the insulating interlayer 122. The first drain electrode DE1 contacts the first semiconductor layer SM1 through the fifth contact hole CH5 in the gate insulating layer 121 and the insulating interlayer 122.

[0067] The data line DL, the driving voltage line DVL, and the second capacitor plate CS2 may be on the insulating interlayer 122. The second capacitor plate CS2 may be formed unitarily with the driving voltage line DVL.

[0068] A protection layer 130 may be on the first source electrode SE1, the first drain electrode DE1, the second source electrode SE2, and the second drain electrode DE2. The protection layer 130 serves to protect the switching thin film transistor TFT1 and the driving thin film transistor TFT2, and may also serves to planarize upper surfaces thereof.

[0069] The first electrode 171 may be on the protection layer 130. The first electrode 171 may be, e.g., an anode electrode. According to an exemplary embodiment, the first electrode 171 is a pixel electrode. The first electrode 171 may be connected to the second drain electrode DE2 of the driving thin film transistor TFT2 through the third contact hole CH3 in the protection layer 130.

[0070] A pixel defining layer 190 may be on protection layer 130. The pixel defining layer 190 may include a polymer organic material. The pixel defining layer 190 may include at least one of, for example, a polyimide (PI) resin, a polyacrylic resin, a polyethylene terephthalate (PET) resin, and a polyethylene-naphthalate (PEN) resin. According to an exemplary embodiment, the pixel defining layer 190 may include a polyimide (PI) resin.

[0071] The pixel defining layer 190 defines an opening OP, and the first electrode 171 is exposed through the opening OP. In addition, a light emission area of the OLED 170, e.g., a pixel area, is defined by the opening OP.

[0072] Referring to FIGS. 1 and 4, the pixel defining layer 190 exposes an upper surface of the first electrode 171 and protrudes from the first electrode 171 in the third direction along a periphery of each pixel. The first electrode 171 overlaps at least a portion of the pixel defining layer 190 and does not overlap the pixel defining layer 190 at the opening OP. The opening OP may be defined as a portion of an area above the first electrode 171 that does not overlap the pixel defining layer 190.

[0073] The first electrode 171 is electrically conductive, and may be a transmissive electrode, a transfective electrode, or a reflective electrode. When the first electrode 171 is a transmissive electrode, the first electrode 171 includes a transparent conductive oxide. For example, the transparent conductive oxide may include at least one of indium tin oxide (ITO), indium zinc oxide (IZO), zinc oxide (ZnO), and indium tin zinc oxide (ITZO). When the first electrode 171

is a transmissive electrode or a reflective electrode, the first electrode 171 may include at least one of Ag, Mg, Al, Pt, Pd, Au, Ni, Nd, Ir, Cr, and Cu.

[0074] The organic light emitting layer 172 may be on the first electrode 171, e.g., in the opening OP. In particular, the organic light emitting layer 172 may be on the first electrode 171 in the opening OP. The organic light emitting layer 172 may be on a sidewall of the opening OP defined by the pixel defining layer 190 such that organic light emitting layer 172 contacts the pixel defining layer 190.

[0075] The organic light emitting layer 172 includes a light emitting material. In addition, the organic light emitting layer 172 may include a host and a light emitting dopant. The organic light emitting layer 172 may be manufactured using a known method, using a known material. For example, the organic light emitting layer 172 may be formed through various methods, e.g., vacuum deposition, spin coating, casting, a Langmuir-Blodgett (LB) method, inkjet printing, laser printing, a laser induced thermal imaging (LITI), and the like.

[0076] At least one of a hole injection layer (HIL) and a hole transport layer (HTL) may be between the first electrode 171 and the organic light emitting layer 172.

[0077] The second electrode 173 may be on the organic light emitting layer 172, e.g., in the opening OP. The second electrode 173 may also extend along the third direction in contact with a sidewall of the pixel defining layer 190 and may extend along an upper surface of the pixel defining layer 190. The second electrode 173 may be a common electrode and may be a cathode. The second electrode 173 may be a transmissive electrode, a transmissive electrode, or a reflective electrode.

[0078] When the second electrode 173 is a transmissive electrode, the second electrode 173 may include at least one of Li, Ca, LiF/Ca, LiF/Al, Al, Mg, BaF, Ba, Ag, and Cu. For example, the second electrode 173 may include a mixture of Ag and Mg.

[0079] When the second electrode 173 is a transmissive electrode or a reflective electrode, the second electrode 173 may include at least one of Ag, Mg, Al, Pt, Pd, Au, Ni, Nd, Ir, Cr, Li, Ca, LiF/Ca, LiF/Al, Mo, Ti and Cu. In addition, the second electrode 173 may further include a transparent conductive layer which includes, for example, indium tin oxide (ITO), indium zinc oxide (IZO), zinc oxide (ZnO), and indium-zinc-tin oxide (IZTO), in addition to the transmissive electrode or the reflective electrode.

[0080] At least one of an electron transport layer (ETL) and an electron injection layer (EIL) may be between the organic light emitting layer 172 and the second electrode 173.

[0081] When the OLED 170 is a top emission type, the first electrode 171 may be a reflective electrode and the second electrode 173 may be a transmissive or transmissive electrode. When the OLED 170 is a bottom emission type, the first electrode 171 may be a transmissive or transmissive electrode, and the second electrode 173 may be a reflective electrode.

[0082] According to an exemplary embodiment, the OLED 170 may be a top emission type, the first electrode 171 may be a reflective electrode, and the second electrode 173 may be a transmissive electrode.

[0083] A thin film encapsulation layer 180 may be on the second electrode 173 to protect the OLED 170. The thin film encapsulation layer 180 may substantially prevent outside

contaminants, e.g., moisture or oxygen, from penetrating into the OLED 170. Specifically, the thin film encapsulation layer 180 may include at least one inorganic layer 181 and 183, and at least one organic layer 182 alternately arranged with the at least one inorganic layer 181 and 183

[0084] Referring to FIGS. 3 and 4, the thin film encapsulation layer 180 may include two inorganic layers 181 and 183, and one organic layer 182. Specifically, the at least one inorganic layer may include a first inorganic layer 181 and a second inorganic layer 183, and the at least one organic layer may include a first organic layer 182 between the first inorganic layer 181 and the second inorganic layer 183. However, exemplary embodiments are limited to the structure illustrated in FIGS. 3 and 4.

[0085] A capping layer 300 may be on the second electrode 173. The capping layer 300 may protect the OLED 170 and may help light emitted from the organic light emitting layer 172 to be efficiently emitted.

[0086] The capping layer 300 may include at least one of inorganic and organic materials having light transmitting characteristics. The capping layer may have a thickness in a range from about 30 nm to about 300 nm, and may have a thickness of about 300 nm or more. As the thickness of the capping layer increases, it is advantageous to protect the OLED 170. However, if the capping layer is too thick, it is disadvantageous for slimming down the display device. The capping layer may be formed by methods known in the art, e.g., deposition.

[0087] According to an exemplary embodiment, the capping layer 300 may include a high refractive index portion 311, a first low refractive index portion 321, a first reflection layer 331, and a second low refractive index portion 322 on the thin film encapsulation layer 180. In particular, these portions together form a light control layer that may have a same thickness along the third direction, but have varying characteristics along in portions arranged in the first and second directions. As discussed in detail below, the capping layer 300 may include two reflective interfaces adjacent the pixel area.

[0088] The high refractive index portion 311 overlaps at least a portion of the first electrode 171 on a plane. Specifically, the high refractive index portion 311 overlaps the opening OP, e.g., a substantial entirety of the opening OP, of the pixel defining layer 190 along the third direction. The high refractive index portion 311 may have an area less than an area of the first electrode 171 on a plane, and may have an area substantially equal to an area of the opening OP on a plane, e.g., along the first and second directions. However, exemplary embodiments are not limited thereto, and the high refractive index portion 311 may have an area larger than an area of the opening OP on a plane.

[0089] The high refractive index portion 311 may have a quadrangular shape on a plane e.g., along the first and second directions as illustrated in FIG. 2A. However, exemplary embodiments are not limited thereto, and the high refractive index portion 311 may have a circular shape on a plane as illustrated in FIG. 2B, or may have various shapes.

[0090] Upper surfaces of the high refractive index portion 311, the first low refractive index portion 321, the first reflection layer 331, and the second low refractive index portion 322 may be flat. However, exemplary embodiments are not limited thereto.

[0091] The high refractive index portion 311 has a refractive index higher than refractive indices of the first low

refractive index portion **321** and the second low refractive index portion **322** to be described below. Specifically, the high refractive index portion **311** may have a refractive index of about 1.6 or more, and the first low refractive index portion **321** and the second low refractive index portion **322** may have a refractive index less than about 1.6. For example, the high refractive index portion **311** may have a refractive index of about 1.65, and the first low refractive index portion **321** and the second low refractive index portion **322** may have a refractive index of about 1.5.

[0092] The first low refractive index portion **321**, the first reflection layer **331**, and the second low refractive index portion **322** overlap the pixel defining layer **190** on a plane, e.g., along the third direction.

[0093] The first low refractive index portion **321** overlaps the pixel defining layer **190** on a plane and is spaced apart from the high refractive index portion **311** between the plurality of high refractive index portions **311**. Accordingly, the first low refractive index portion **321** may have an area less than an area of the pixel defining layer **190** on a plane.

[0094] The first low refractive index portion **321** may have a thickness less than a thickness of the high refractive index portion **311**, e.g., along the third direction. However, exemplary embodiments are not limited thereto, and the first low refractive index portion **321** may have a thickness substantially equal to a thickness of the high refractive index portion **311**.

[0095] The first low refractive index portion **321** may include a first inclined portion **321a** that forms a first angle θ_1 with an upper surface of the thin film encapsulation layer **180**. The first inclined portion **321a** will be described below in detail with reference to FIGS. 5A, 5B and 5C.

[0096] The first reflection layer **331** overlaps the pixel defining layer **190** and is spaced apart from the high refractive index portions **311** between the plurality of high refractive index portions **311**, as described in FIGS. 2A and 2B. Accordingly, the first reflection layer **331** may have an area less than an area of the pixel defining layer **190** on a plane.

[0097] The first reflection layer **331** may cover the first low refractive index portion **321**. Accordingly, the first reflection layer **331** and the thin film encapsulation layer **180** may form an angle substantially equal to the first angle θ_1 of the first inclined portion **321a**. For example, an upper surface of the first reflection layer **331** and an upper surface of the thin film encapsulation layer **180** may form an angle substantially equal to the first angle θ_1 of the first inclined portion **321a**, which will be described below in detail with reference to FIGS. 5A, 5B and 5C.

[0098] The first reflection layer **331** may have a thickness of about 300 Å or more to improve reflectance. The first reflection layer **331** may include a metal material having high reflectance. For example, the first reflection layer **331** may include at least one of molybdenum (Mo), an alloy (MoTi) of molybdenum and titanium, aluminum (Al), silver (Ag), APC (Ag; Pb; Cu), and platinum (Pt).

[0099] The second low refractive index portion **322** overlaps the pixel defining layer **190** along the third direction. As illustrated in FIGS. 2A and 2B, the second low refractive index portion **322** may be disposed, on a plane, between the first low refractive index portion **321** and the high refractive index portion **311**, and the second low refractive index portion **322** may have a shape surrounding the high refractive index portion **311**. Accordingly, the second low refractive index portion **322** may have an area less than an area of

the pixel defining layer **190** on a plane. However, exemplary embodiments are not limited thereto, and the second low refractive index portion **322** may be also on the first low refractive index portion **321** and the first reflection layer **331** to have an area substantially equal to an area of the pixel defining layer **190**.

[0100] According to an exemplary embodiment, the second low refractive index portion **322** directly contacts the high refractive index portion **311**. For example, the second low refractive index portion **322** directly contacts the high refractive index portion **311** at a second inclined portion **322a**.

[0101] According to an exemplary embodiment, as shown in FIG. 4, light output from a first light extraction area LEA1 of the OLED **170** towards a lateral side may be totally reflected from the second inclined portion **322a**, which is an interface between the high refractive index portion **311** and the second low refractive index portion **322**, thereby being output toward a front side, and light from a second light extraction area LEA2 of the OLED **170** toward the lateral side is reflected from the first reflection layer **331**, thereby being output toward the front side. Accordingly, the light output toward the lateral side from the first light extraction area LEA1 and the second light extraction area LEA2 of the OLED **170** is output toward a front side of the display device using the high refractive index portion **311**, the first low refractive index portion **321**, the first reflection layer **331**, and the second low refractive index portion **322**, such that light emission efficiency of the display device may be improved.

[0102] In such an exemplary embodiment, light emitted from an OLED **170** not adjacent to the second inclined portion **322a** that is totally reflected from the second inclined portion **322a** may have a color different from a color of a light that is emitted from an OLED **170** adjacent to the second inclined portion **322a** that is totally reflected from the second inclined portion **322a**. Accordingly, a color mixture phenomenon may occur, and display quality of the display device may be lowered. In order to substantially prevent this, light totally reflected from the second inclined portion **322a** may be light emitted from the OLED **170** spaced apart from the first reflection layer **331** by a distance $d1$ of about 100 μm or less. In order to achieve optimum light emission efficiency, the second low refractive index portion **322** includes a second inclined portion **322a** that forms a second angle θ_2 with the upper surface of the thin film encapsulation layer **180**. The second inclined portion **322a** will be described below in detail with reference to FIGS. 5A, 5B and 5C.

[0103] The second low refractive index portion **322** may have a refractive index substantially equal to a refractive index of the first low refractive index portion **321**, and the second low refractive index portion **322** may have a refractive index less than a refractive index of the high refractive index portion **311**. For example, the high refractive index portion **311** may have a refractive index of about 1.65, and the first low refractive index portion **321** and the second low refractive index portion **322** may have a refractive index of about 1.5.

[0104] A second substrate **211** may be on the high refractive index portion **311** and the first low refractive index portion **321**, the first reflection layer **331**, and the second low refractive index portion **322**. The material of the second substrate **211** is not particularly limited. For example, the

second substrate **211** may include an insulating material, e.g., glass, plastic, quartz, or the like. The material for the second substrate **211** may be selected, for example, from materials which are excellent in mechanical strength, thermal stability, transparency, surface smoothness, ease of handling, water resistance, and the like. The second substrate **211** may be substantially the same as the first substrate **111**.

[0105] According to an exemplary embodiment, a circular polarization plate **212** (see FIG. 4) may be on the capping layer **300**, e.g., on the high refractive index portion **311**, the first low refractive index portion **321**, the first reflection layer **331**, and the second low refractive index portion **322**. The circular polarization plate **212** may include a linear polarization plate and a $\frac{1}{4}\lambda$ phase difference plate. An external light incident from the outside to the display device is linearly polarized through the linear polarization plate of the circular polarization plate **212** and is circularly polarized through the $\frac{1}{4}\lambda$ phase difference plate. The external light in the circularly polarized state is reflected by the first reflection layer **331**, and passes through the $\frac{1}{4}\lambda$ phase difference plate again to be in a linearly polarized state in a direction perpendicular to a transmission axis of the linear polarization plate. Accordingly, the incident external light may not be transmitted by the circular polarization plate **212** and may not exit to the outside, causing extinction interference. In other words, the circular polarization plate **212** may substantially prevent the external light from being emitted toward the front side of the display device after being reflected by at the interface between the high refractive index portion **311** and the first low refractive index portion **321**, and at the first reflection layer **331** on the second low refractive index portion **322**.

[0106] Hereinafter, the first inclined portion and the second inclined portion according to an exemplary embodiment will be described in detail with reference to FIGS. 5A, 5B and 5C. FIG. 5A is an enlarged view of the high refractive index portion, the first low refractive index portion, the first reflection layer, and the second low refractive index portion according to an exemplary embodiment, FIG. 5B is an enlarged view of a first inclined portion according to an exemplary embodiment, and FIG. 5C is an enlarged view of a second inclined portion according to an exemplary embodiment.

[0107] Referring to FIG. 5A, the first low refractive index portion **321** includes the first inclined portion **321a** that forms the first angle θ_1 with the upper surface of the thin film encapsulation layer **180**, and the second low refractive index portion **322** includes the second inclined portion **322a** that forms the second angle θ_2 with the upper surface of the thin film encapsulation layer **180**.

[0108] The first low refractive index portion **321** may be spaced apart from the high refractive index portion **311** by a distance $d2$ in a range from about $2\ \mu\text{m}$ to about $10\ \mu\text{m}$. Specifically, a point P1 at which the thin film encapsulation layer **180**, the high refractive index portion **311**, and the second low refractive index portion **322** contact each other may be spaced apart from a second point P2 at which the first inclined portion **321a** of the first low refractive index portion **321** contacts the thin film encapsulation layer **180** by a distance in a range from about $2\ \mu\text{m}$ to about $10\ \mu\text{m}$. Accordingly, an area from which light may be extracted toward the front side of the display device increases, and the

light emission efficiency of the display device according to an exemplary embodiment may be improved.

[0109] Referring to FIG. 5B, light incident on the first reflection layer **331** is reflected from the first reflection layer **331** at an angle θ_L substantially equal to an angle at which the light is incident on the first reflection layer **331** with respect to a line normal to the first reflection layer **331** according to law of reflection.

[0110] The first reflection layer **331** may cover the first low refractive index portion **321** and may have a uniform thickness. An upper surface of the first reflection layer **331** and the upper surface of the thin film encapsulation layer **180** may form an angle substantially equal to the first angle θ_1 of the first inclined portion **321a**.

[0111] Light emitted from the OLED **170** is incident to the first reflection layer **331** at an angle of about 0 degrees or more with respect to the upper surface of the thin film encapsulation layer **180**. Accordingly, in order to output light incident on and reflected from the first reflection layer **331** toward the front side of the display device, the first angle θ_1 may be about 45 degrees or more. According to an exemplary embodiment, the first angle θ_1 may be about 48 degrees or more in order to substantially prevent a color mixture of the display device.

[0112] Referring to FIG. 5C, light incident on the interface between the high refractive index portion **311** and the second low refractive index portion **322** is totally reflected therefrom is reflected at an angle θ_{11} substantially equal to an angle at which the light is incident to the second low refractive index portion **322** with respect to the second inclined portion **322a** of the second low refractive index portion **322** according to law of reflection.

[0113] When light incident on the second inclined portion **322a** is emitted toward the front side of the display device, as the light emitted toward the front side of the display device is perpendicular to the thin film encapsulation layer **180** and a line normal to the second inclined portion **322a** is perpendicular to a surface of the second inclined portion **322a**, the second angle θ_2 of the second inclined portion **322a** may have a value substantially equal to a value of the incidence angle θ_{11} of the light incident to the second inclined portion **322**.

[0114] The second inclined portion **322a** is an interface between the high refractive index portion **311** and the second low refractive index portion **322**. Thus, not all light incident to the second inclined portion **322a** from the high refractive index portion **311** is totally reflected. As such, when a light is refracted from a medium having a relatively high refractive index to a medium having a relatively low refractive index, as an incidence angle increases, a refraction angle increases. In that case, an incidence angle when the refraction angle is about 90 degrees is called a critical angle θ_c . In other words, only a light having an angle of about the critical angle θ_c or more among the light incident on the high refractive index portion **311** to the second inclined portion **322a** is totally reflected from the second inclined portion **322a**. Accordingly, the second angle θ_2 of the second low refractive index portion **322** may be about 60 degrees or more.

[0115] For example, when a refractive index n_H of the high refractive index portion **311** is about 1.65 and a refractive index n_L of the first low refractive index portion **321** and the

second low refractive index portion **322** is about 1.5, the critical angle θ_c may be calculated based on the following Mathematical Equation 1.

$$\theta_c = \arcsin(n_L/n_H) \quad [\text{Mathematical Equation 1}]$$

[0116] The critical angle θ_c calculated by the Mathematical Equation 1 is about 65.38 degrees. When the refractive index n_H of the high refractive index portion **311** is about 1.65 and a refractive index n_L of the first low refractive index portion **321** and the second low refractive index portion **322** is about 1.5, the incidence angle θ_H of the light incident to the second inclined portion **322a** and the second angle θ_2 of the second inclined portion **322a** may be about 65.38 degrees or more.

[0117] FIG. 6 is a plan view illustrating a pixel of a display device according to another exemplary embodiment. FIG. 7 is a plan view illustrating a first low refractive index portion, a first reflection layer, a second low refractive index portion, a second reflection layer, and a third low refractive index portion according to another exemplary embodiment. FIG. 8 is a cross-sectional view taken along the line III-III' of FIG. 7.

[0118] Hereinafter, another exemplary embodiment will be described in detail with reference to FIGS. 6, 7, and 8. In order to avoid redundancy, descriptions of components described hereinabove will be omitted.

[0119] According to another exemplary embodiment, a capping layer **300a** may include the first low refractive index portion **321**, the first reflection layer **331**, the second low refractive index portion **322**, a second reflection layer **332**, and a third low refractive index portion **323** on a thin film encapsulation layer **180**. In particular, in this embodiment, the high refractive index layer is replaced by a low refractive index layer and a reflection layer, such that there are still two reflective boundaries adjacent the pixel area in the capping layer **300a**.

[0120] The first low refractive index portion **321**, the first reflection layer **331**, the second low refractive index portion **322**, and the second reflection layer **332** overlap the pixel defining layer **190**, e.g., along the third direction, and the third low refractive index portion **323** overlaps at least a portion of a first electrode **171**, e.g., overlaps a substantial entirety of the opening OP along the third direction.

[0121] The first low refractive index portion **321** overlaps the pixel defining layer **190**, e.g., along the third direction, and may be spaced apart from the plurality of third low refractive index portions **323** between the plurality of third low refractive index portions **323** on a plane, e.g. along the first and second directions. Accordingly, the first low refractive index portion **321** may have an area less than an area of the pixel defining layer **190** on a plane.

[0122] The first low refractive index portion **321** may have a thickness less than a thickness of the third low refractive index portion **323**. However, exemplary embodiments are not limited thereto, and the first low refractive index portion **321** may have a thickness substantially equal to a thickness of the third low refractive index portion **323**.

[0123] The first low refractive index portion **321** may include the first inclined portion **321a** which forms the first angle θ_1 with the upper surface of the thin film encapsulation layer **180**. The first low refractive index portion **321** may have a refractive index substantially equal to a refractive index of the second low refractive index portion **322**, and the first low refractive index portion **321** may have a refractive

index substantially equal to a refractive index of the third low refractive index portion **323**.

[0124] The first reflection layer **331** may be between the first low refractive index portion **321** and the second low refractive index portion **322**, and may be spaced apart from the plurality of third low refractive index portions **323** between the plurality of third low refractive index portions **323** on a plane, e.g., along the first and second directions. Accordingly, the first reflection layer **331** may have an area less than an area of the pixel defining layer **190** on a plane.

[0125] The first reflection layer **331** may have a thickness of about 300 Å or more to improve reflectance. The first reflection layer **331** may cover the first low refractive index portion **321**, e.g., side and upper surfaces thereof, and may have a uniform thickness. An upper surface of the first reflection layer **331** and the upper surface of the thin film encapsulation layer **180** may form an angle substantially equal to a first angle θ_1 of the first inclined portion **321a**.

[0126] The first reflection layer **331** may include a metal material having high reflectance. For example, the first reflection layer **331** may include at least one of molybdenum (Mo), an alloy (MoTi) of molybdenum and titanium, aluminum (Al), silver (Ag), APC (Ag; Pb; Cu), and platinum (Pt).

[0127] The second low refractive index portion **322** overlaps the pixel defining layer **190** on a plane, and is between the first low refractive index portion **321** and the third low refractive index portion **323** on a plane. Accordingly, the second low refractive index portion **322** may have an area less than an area of the pixel defining layer **190** on a plane. However, exemplary embodiments are not limited thereto, and the second low refractive index portion **322** may be on the first low refractive index portion **321** and the first reflection layer **331**, and the second low refractive index portion **322** may have an area substantially equal to an area of the pixel defining layer **190**.

[0128] The second low refractive index portion **322** includes a second inclined portion **322a** which forms a third angle θ_3 with the upper surface of the thin film encapsulation layer **180**.

[0129] The second reflection layer **332** is between the second low refractive index portion **322** and the third low refractive index portion **323**, and spaced apart from the plurality of third low refractive index portions **323** between the plurality of third low refractive index portions **323** on a plane. Accordingly, the second reflection layer **332** may have an area less than an area of the pixel defining layer **190** on a plane.

[0130] The second reflection layer **332** may have a thickness of about 300 Å or more to improve reflectance. The second reflection layer **332** may cover the second inclined portion **322a** of the second low refractive index portion **322** and have a uniform thickness. An upper surface of the second reflection layer **332** and the upper surface of the thin film encapsulation layer **180** may form an angle substantially equal to the third angle θ_3 of the second inclined portion **322a**.

[0131] The second reflection layer **332** may include a metal material having high reflectance. For example, the second reflection layer **332** may include at least one of molybdenum (Mo), an alloy (MoTi) of molybdenum and titanium, aluminum (Al), silver (Ag), APC (Ag; Pb; Cu), and

platinum (Pt). The second reflection layer 332 may include a material substantially equal to a material included in the first reflection layer 331.

[0132] The first reflection layer 331 and the second reflection layer 332 may reflect a light emitted toward a lateral side of the display device toward a front side of the display device. To this end, the first angle θ_1 of the first inclined portion 321a may be about 45 degrees or more and the third angle θ_3 of the second inclined portion 322a may be about 45 degrees or more. Accordingly, the upper surface of the first reflection layer 331 and the upper surface of the thin film encapsulation layer 180 may form an angle of about 45 degrees or more which is substantially equal to the first angle θ_1 , and the upper surface of the second reflection layer 332 and the upper surface of the thin film encapsulation layer 180 may form an angle of about 45 degrees or more which is substantially equal to the third angle θ_3 . According to another exemplary embodiment, in order to substantially prevent a color mixture of the display device, each of the first angle θ_1 and the third angle θ_3 may be about 48 degrees or more, and the upper surface of the thin film encapsulation layer 180 and respective upper surfaces of the first reflection layer 331 and the second reflection layer 332 may form an angle of about 48 degrees or more.

[0133] FIG. 9 is a plan view illustrating a high refractive index portion, the first low refractive index portion, the first reflection layer, the second low refractive index portion, the second reflection layer, and the third low refractive index portion according to still another exemplary embodiment, and FIG. 10 is a cross-sectional view illustrating a display device according to still another exemplary embodiment. Hereinafter, still another exemplary embodiment will be described in detail with reference to FIGS. 9 and 10. In order to avoid redundancy, descriptions of components described hereinabove will be omitted.

[0134] According to still another exemplary embodiment, a capping layer 300b may include the high refractive index portion 311, the first low refractive index portion 321, the first reflection layer 331, the second low refractive index portion 322, the second reflection layer 332, and the third low refractive index portion 323 on the thin film encapsulation layer 180.

[0135] The high refractive index portion 311 overlaps at least a portion of a first electrode 171 on a plane, e.g., along the third direction. Specifically, the high refractive index portion 311 overlaps an opening OP of the pixel defining layer 190. The high refractive index portion 311 may have an area less than an area of the first electrode 171 on a plane and have an area substantially equal to an area of the opening OP on a plane. However, exemplary embodiments are not limited thereto, and the high refractive index portion 311 may have an area larger than an area of the opening OP on a plane.

[0136] Upper surfaces of the high refractive index portion 311, the first low refractive index portion 321, the first reflection layer 331, the second low refractive index portion 322, the second reflection layer 332, and the third low refractive index portion 323 may be flat. However, exemplary embodiments are not limited thereto.

[0137] The high refractive index portion 311 has a refractive index higher than refractive indices of the first low refractive index portion 321, the second low refractive index portion 322, and the third low refractive index portion 323 to be described below. Specifically, the high refractive index

portion 311 may have a refractive index of about 1.6 or more, and the first low refractive index portion 321, the second low refractive index portion 322, and the third low refractive index portion 323 may have a refractive index less than about 1.6. For example, the high refractive index portion 311 may have a refractive index of about 1.65, and the first low refractive index portion 321, the second low refractive index portion 322, and the third low refractive index portion 323 may have a refractive index of about 1.5. [0138] The first low refractive index portion 321, the first reflection layer 331, the second low refractive index portion 322, the second reflection layer 332, and the third low refractive index portion 323 overlap the pixel defining layer 190 along the third direction.

[0139] The first low refractive index portion 321 overlaps the pixel defining layer 190 and is spaced apart from the plurality of high refractive index portions 311 between the plurality of high refractive index portions 311 on a plane. Accordingly, the first low refractive index portion 321 may have an area less than an area of the pixel defining layer 190 on a plane.

[0140] The first low refractive index portion 321 may have a thickness less than a thickness of the high refractive index portion 311. However, exemplary embodiments are not limited thereto, and the first low refractive index portion 321 may have a thickness substantially equal to a thickness of the high refractive index portion 311.

[0141] The first low refractive index portion 321 may have a refractive index lower than a refractive index of the high refractive index portion 311. Specifically, the high refractive index portion 311 may have a refractive index of about 1.6 or more, and the first low refractive index portion 321 and the second low refractive index portion 322 may have a refractive index less than about 1.6. For example, the high refractive index portion 311 may have a refractive index of about 1.65, and the first low refractive index portion 321, the second low refractive index portion 322, and the third low refractive index portion 323 may have a refractive index of about 1.5.

[0142] The first low refractive index portion 321 includes a first inclined portion 321a that forms the first angle θ_1 with an upper surface of the thin film encapsulation layer 180.

[0143] The first reflection layer 331 may be between the first low refractive index portion 321 and the second low refractive index portion 322, and is spaced apart from the plurality of high refractive index portions 311 between the plurality of high refractive index portions 311 on a plane. Accordingly, the first reflection layer 331 may have an area less than an area of the pixel defining layer 190 on a plane.

[0144] The first reflection layer 331 may have a thickness of about 300 Å or more to improve reflectance. The first reflection layer 331 may cover the first low refractive index portion 321, e.g., side and upper surfaces thereof, and may have a uniform thickness.

[0145] An upper surface of the first reflection layer 331 and the upper surface of the thin film encapsulation layer 180 may form an angle substantially equal to the first angle θ_1 of the first inclined portion 321a.

[0146] The first reflection layer 331 may include a metal material having high reflectance. For example, the first reflection layer 331 may include at least one of molybdenum (Mo), an alloy (MoTi) of molybdenum and titanium, aluminum (Al), silver (Ag), APC (Ag; Pb; Cu), and platinum (Pt).

[0147] The second low refractive index portion 322 overlaps the pixel defining layer 190 on a plane. Specifically, the second low refractive index portion 322 may be between the first low refractive index portion 321 and the third low refractive index portion 323 on a plane. Accordingly, the second low refractive index portion 322 may have an area less than an area of the pixel defining layer 190 on a plane. However, exemplary embodiments are not limited thereto, and the second low refractive index portion 322 may be disposed on the first low refractive index portion 321 and the first reflection layer 331.

[0148] The second reflection layer 332 is between the second low refractive index portion 322 and the third low refractive index portion 323, and is spaced apart from the plurality of high refractive index portions 311 between the plurality of high refractive index portions 311 on a plane. Accordingly, the second reflection layer 332 may have an area less than an area of the pixel defining layer 190 on a plane.

[0149] The second reflection layer 332 may have a thickness of 300 Å or more to improve reflectance. The second reflection layer 332 may cover the second inclined portion 322a of the second low refractive index portion 322 and may have a uniform thickness. An upper surface of the second reflection layer 332 and the upper surface of the thin film encapsulation layer 180 may form an angle substantially equal to the third angle θ_3 of the second inclined portion 322a.

[0150] The second reflection layer 332 may include a metal material having high reflectance. For example, the second reflection layer 332 may include at least one of molybdenum (Mo), an alloy (MoTi) of molybdenum and titanium, aluminum (Al), silver (Ag), APC (Ag; Pb; Cu), and platinum (Pt). The second reflection layer 332 may include a material substantially equal to a material included in the first reflection layer 331.

[0151] The first reflection layer 331 and the second reflection layer 332 may reflect a light emitted toward a lateral side of the display device toward a front side of the display device. To this end, the first angle θ_1 of the first inclined portion 321a may be about 45 degrees or more and the third angle θ_3 of the second inclined portion 322a may be about 45 degrees or more. Accordingly, the upper surface of the first reflection layer 331 and the upper surface of the thin film encapsulation layer 180 may form an angle of about 45 degrees or more which is substantially equal to the first angle θ_1 , and the upper surface of the second reflection layer 332 and the upper surface of the thin film encapsulation layer 180 may form an angle of about 45 degrees or more which is substantially equal to the third angle θ_3 . According to the present exemplary embodiment, in order to substantially prevent a color mixture of the display device, each of the first angle θ_1 and the third angle θ_3 may be about 48 degrees or more, and the upper surface of the thin film encapsulation layer 180 and respective upper surfaces of the first reflection layer 331 and the second reflection layer 332 may form an angle of about 48 degrees or more.

[0152] The third low refractive index portion 323 overlaps the pixel defining layer 190 on a plane. Specifically, the third low refractive index portion 323 may be disposed on a plane between the second low refractive index portion 322 and the high refractive index portion 311. Accordingly, the third low refractive index portion 323 may have an area less than an area of the pixel defining layer 190. However, exemplary

embodiments are not limited thereto, and the third low refractive index portion 323 may be on the second lower refractive index portion 322 and the second reflection layer 332, and the third low refractive index portion 323 may have an area substantially equal to an area of the pixel defining layer 190 on a plane.

[0153] The third low refractive index portion 323 may directly contact the high refractive index portion 311. Specifically, the third low refractive index portion 323 directly contacts the high refractive index portion 311 at a third inclined portion 323a.

[0154] According to the present exemplary embodiment, a light output toward a lateral side of the OLED 170 is totally reflected from the third inclined portion 323a, which is an interface between the high refractive index portion 311 and the third low refractive index portion 323, thereby being output toward a front side. Accordingly, the light output toward the lateral side of the OLED 170 is output toward a front side of the display device such that light emission efficiency of the display device may be improved.

[0155] However, light that is emitted from an OLED 170 not adjacent to the third inclined portion 323a and totally reflected from the third inclined portion 323a may have a color different from a color of a light that is emitted from an OLED 170 adjacent to the third inclined portion 323a and totally reflected from the third inclined portion 323a. Accordingly, a color mixture phenomenon may occur, and display quality of the display device may be lowered. In order to substantially prevent this, the third low refractive index portion 323 includes the third inclined portion 323a that forms the second angle θ_2 with the upper surface of the thin film encapsulation layer 180.

[0156] The third inclined portion 323a is an interface between the high refractive index portion 311 and the third low refractive index portion 323. Not that all light incident on the third inclined portion 323a is totally reflected. As such, when light is refracted from a medium having a relatively high refractive index to a medium having a relatively low refractive index, as an incidence angle increases, a refraction angle increases. In that case, an incidence angle when the refraction angle is about 90 degrees is called a critical angle θ_c . In other words, only a light having an angle of about the critical angle θ_c or more among the light incident from the high refractive index portion 311 to the third inclined portion 323a is totally reflected from the third inclined portion 323a. Accordingly, the second angle θ_2 of the third inclined portion 323a may have an angle of about 60 degrees or more. For example, when a refractive index of the high refractive index portion 311 is about 1.65 and refractive indices of the first low refractive index portion 321, the second low refractive index portion 322, and the third low refractive index portion is about 1.5, the critical angle θ_c is about 65.38 degrees, and an incidence angle of the light incident to the third inclined portion 323a and the second angle θ_2 of the third inclined portion 323a may be an angle of about 65.38 degrees or more.

[0157] As set forth hereinabove, according to one or more exemplary embodiments, the display device includes a capping layer having two reflective interfaces adjacent the light emission or pixel area on a thin film encapsulation layer, and spaced apart from one another in a plane view. Light emitted from an OLED towards the side of the device may be directed to the front side of the display device due to the two

reflective interfaces, thereby increasing light emission efficiency. The reflective interfaces may include a boundary between high and low refractive index materials and/or a reflective layer.

[0158] Example embodiments have been disclosed herein, and although specific terms are employed, they are used and are to be interpreted in a generic and descriptive sense only and not for purpose of limitation. In some instances, as would be apparent to one of ordinary skill in the art as of the filing of the present application, features, characteristics, and/or elements described in connection with a particular embodiment may be used singly or in combination with features, characteristics, and/or elements described in connection with other embodiments unless otherwise specifically indicated. Accordingly, it will be understood by those of skill in the art that various changes in form and details may be made without departing from the spirit and scope of the present invention as set forth in the following claims.

What is claimed is:

1. A display device, comprising:
 - a first substrate;
 - an organic light emitting element on the first substrate and including a first electrode, an organic light emitting layer, and a second electrode;
 - a pixel defining layer surrounding the first electrode on the first substrate;
 - a thin film encapsulation layer on the organic light emitting element and the pixel defining layer;
 - a high refractive index portion overlapping, on a plane, at least a portion of the first electrode on the thin film encapsulation layer;
 - a first low refractive index portion on the thin film encapsulation layer, the first low refractive index portion overlapping, on a plane, the pixel defining layer, and including a first inclined portion forming a first angle with the thin film encapsulation layer;
 - a second low refractive index portion on the thin film encapsulation layer, the second low refractive index portion being, on a plane, between the first low refractive index portion and the high refractive index portion, and including a second inclined portion forming a second angle with the thin film encapsulation layer; and
 - a first reflection layer on the thin film encapsulation layer, the first reflection layer being, on a plane, between the first low refractive index portion and the second low refractive index portion on the thin film encapsulation layer.
2. The display device as claimed in claim 1, wherein the first angle is about 45 degrees or more.
3. The display device as claimed in claim 1, wherein the second angle is about 60 degrees or more.
4. The display device as claimed in claim 1, wherein the high refractive index portion has a refractive index of about 1.6 or more and the first and second low refractive index portions have refractive indices less than about 1.6.
5. The display device as claimed in claim 1, wherein the first low refractive index portion has a refractive index substantially equal to a refractive index of the second low refractive index portion.
6. The display device as claimed in claim 1, further comprising a circular polarization plate on the high refractive index portion, the first low refractive index portion, and the second low refractive index portion.

7. The display device as claimed in claim 1, wherein the first reflection layer includes at least one of molybdenum (Mo), an alloy (MoTi) of molybdenum and titanium, aluminum (Al), silver (Ag), APC (Ag; Pb; Cu), and platinum (Pt).

8. The display device as claimed in claim 1, wherein the first reflection layer has a thickness of about 300 Å or more.

9. The display device as claimed in claim 1, wherein the first low refractive index portion has a thickness less than a thickness of the second low refractive index portion.

10. The display device as claimed in claim 9, wherein the second low refractive index portion is on the first low refractive index portion and the first reflection layer.

11. A display device, comprising:

- a first substrate;
- an organic light emitting element on the first substrate and including a first electrode, an organic light emitting layer, and a second electrode;
- a pixel defining layer surrounding the first electrode on the first substrate;
- a thin film encapsulation layer on the organic light emitting element and the pixel defining layer;
- a first low refractive index portion on the thin film encapsulation layer overlapping, the first low refractive index portion being, on a plane, the pixel defining layer and including a first inclined portion forming a first angle with the thin film encapsulation layer;
- a second low refractive index portion including a second inclined portion forming a second angle with the thin film encapsulation layer;
- a third low refractive index portion spaced apart from the first low refractive index portion and overlapping, on a plane, at least a portion of the first electrode;
- a first reflection layer on the thin film encapsulation layer, the first reflection layer being between the first low refractive index portion and the second low refractive index portion; and
- a second reflection layer on the thin film encapsulation layer, the second reflection layer being between the second low refractive index portion and the third low refractive index portion,

wherein the second low refractive index portion is between the first low refractive index portion and the third low refractive index portion on a plane.

12. The display device as claimed in claim 11, wherein: the first low refractive index portion has a refractive index substantially equal to a refractive index of the second low refractive index portion, and

the second low refractive index portion has a refractive index substantially equal to a refractive index of the third low refractive index portion.

13. The display device as claimed in claim 11, wherein the first reflection layer includes a material substantially equal to a material included in the second reflection layer.

14. The display device as claimed in claim 11, wherein the first angle and the second angle are about 45 degrees or more.

15. A display device, comprising:

- a first substrate;
- an organic light emitting element on the first substrate and including a first electrode, an organic light emitting layer, and a second electrode;
- a pixel defining layer surrounding the first electrode on the first substrate;

a thin film encapsulation layer on the organic light emitting element and the pixel defining layer;

a high refractive index portion on the thin film encapsulation layer, the high refractive index portion overlapping at least a portion of the first electrode;

a first low refractive index portion on the thin film encapsulation layer, the first low refractive index portion overlapping, on a plane, the pixel defining layer and including a first inclined portion forming a first angle with the thin film encapsulation layer;

a second low refractive index portion including a second inclined portion forming a second angle with the thin film encapsulation layer;

a third low refractive index portion directly contacting the high refractive index portion, spaced apart from the first low refractive index portion, and including a third inclined portion forming a third angle with the thin film encapsulation layer;

a first reflection layer between the first low refractive index portion and the second low refractive index portion; and

a second reflection layer between the second low refractive index portion and the third low refractive index portion,

wherein the second low refractive index portion is between the first low refractive index portion and the third low refractive index portion on a plane.

16. The display device as claimed in claim **15**, wherein: the first low refractive index portion has a refractive index substantially equal to a refractive index of the second low refractive index portion, and

the second low refractive index portion has a refractive index substantially equal to a refractive index of the third low refractive index portion.

17. The display device as claimed in claim **15**, wherein the first angle and the second angle are about 45 degrees or more.

18. The display device as claimed in claim **15**, wherein the third angle is about 60 degrees or more.

19. The display device as claimed in claim **15**, wherein the high refractive index portion has a refractive index of about 1.6 or more, and the first, second and third low refractive index portions have refractive indices less than about 1.6.

20. The display device as claimed in claim **15**, wherein: the first low refractive index portion has a refractive index substantially equal to a refractive index of the second low refractive index portion, and

the first low refractive index portion has a refractive index substantially equal to a refractive index of the third low refractive index portion.

* * * * *

专利名称(译)	显示设备		
公开(公告)号	US20190115404A1	公开(公告)日	2019-04-18
申请号	US16/158520	申请日	2018-10-12
[标]申请(专利权)人(译)	三星显示有限公司		
申请(专利权)人(译)	三星DISPLAY CO. , LTD.		
当前申请(专利权)人(译)	三星DISPLAY CO. , LTD.		
[标]发明人	MOON JEONGWOO PARK BYOUNGHEE CHUNG JINKOO		
发明人	MOON, JEONGWOO PARK, BYOUNGHEE CHUNG, JINKOO		
IPC分类号	H01L27/32 H01L51/50 H01L51/52 H01L27/12		
CPC分类号	H01L27/3246 H01L27/3262 H01L51/5012 H01L51/5206 H01L51/5221 H01L51/5253 H01L51/5271 H01L27/124 H01L51/5275 H01L2251/5315		
优先权	1020170132227 2017-10-12 KR		
外部链接	Espacenet USPTO		

摘要(译)

一种显示装置，包括第一基板，在第一基板上的有机发光元件，包括第一电极，有机发光层和第二电极，围绕第一电极的像素限定层，薄膜封装层，以及薄膜封装层上的覆盖层。覆盖层可以包括与平面图中彼此间隔开的光发射或像素区域相邻的两个反射界面。反射界面可以包括高折射率材料和低折射率材料之间的边界和/或反射层。

